

BSFS project interventions in a glance

How can urban security
be co produced?



● **Baseline assessment**



- **Understanding** how different sectors of the population regard the security situation by evaluating the quantitative and qualitative elements of crime, as well as different factors related to citizens' insecurity in Piraeus
- Citizens in Piraeus believe that urban insecurity is one of the **city's main problems**, which contributes to feelings of hostility in the public space and the breaking down of social cohesion
- This baseline assessment provides the **relevant local stakeholders** with up-to-date knowledge of the local situation in terms of crime and insecurity

- **Indicators:**



Perception of safety



Fear of crime



Individual participation in community-based crime policy



interest in participating in community-based crime policy



Citizens' trust in local authorities with regard to urban security matters

- **Focuses** on citizens, shop owners, and local employees
- **Results** provided crucial information for the **Local Council for Crime Prevention** of Piraeus and the creation of the **Victim Support Unit**

Local Council for Crime Prevention



● CURiM (Collaborative Urban Risk Management platform)

.....

- **It approaches security through participation:** city as a network whose citizens detect and report risks



- **Citizens** can use it to evaluate urban risks, report incivilities, evaluate an offense or crime they have witnessed and communicate with other citizens
- **It provides policymakers** of the **Municipality and the Local Council for Crime Prevention (of which the local police is a member)** with up-to-date information regarding the local security situation and enables the creation of tailored, evidence-based policies, and to visualise risks through a geospatial mapping

● Victim Support Unit

.....

- The baseline assessment allowed for a comprehensive understanding of victimisation factors and to design the creation of the **Victim Support Unit**, which **provides psychological, social and legal advice**
- **The Local Council for Crime Prevention** members contributed to the creation of the **Victim Support Unit** so it can respond with accuracy to identified needs in Piraeus. For an enhanced and sustainable impact, both entities work closely, bringing together the local security stakeholders
- Its action is based on three principles:



CONFIDENTIALITY



ETHICS



DATA PROTECTION

- It provides **assistance services to victims of offenses and crimes** (psychological support, legal counseling, information, referrals to other reputable services)

● Social Interventions

.....



- **Students** awareness sessions on bullying and cyber-threats



- **Students** training sessions on the use of the CURiM app



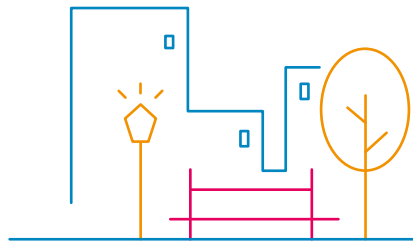
- **Local shop owners** training sessions to protect themselves from repeated targeted crimes



- **Advisory meetings** with citizens of Piraeus to get insights into local issues of crime and security, and to hear about what citizens propose to improve the quality of life in their city

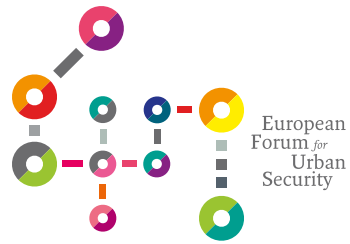
● Spatial Interventions

.....



- Implementation of practices based of needs expressed by Piraeus inhabitants in the baseline assessment **baseline assessment**
- More targeted practices
- Renovation of public spaces
- Restoration playgrounds

Project Partners



Co-funded by
the European Union

This project is co-financed by the European Regional Development Fund through the Urban Innovative Actions Initiative under grant agreement number **UIA04-274**

The dissemination of results herein reflects only the author's view and the European Commission is not responsible for any use that may be made of the information it contains.